

# MURRAY

# MURRAY CORPORATION Clamping Solutions

## Constant Tension Turbo Seal Clamps - SAE Type "T"

A constant tension worm gear clamp designed to compensate for the effects of thermal cycling and/or compression set of hose. Turbo Seal provides dual spring action through convoluted spring action band and spring characteristic of "Dual Bead Shield." This clamp is used in automotive, off-highway, agriculture, heavy duty, aircraft (non-flight critical applications only), and military industries and can be found on turbo chargers, tanks, air-to-air, cooling and fuel lines. The unique "Dual Bead Shield" inner liner also concentrates band-sealing pressure, increasing performance up to 30% compared to standard smooth liners. Flanged edges protect soft hose compounds.

### Turbo-Seal Material Specifications

**Band Material:** Corrosion resistance equivalent to 304 after heat treatment

**Housing Material:** 300 Series Stainless

**Shield Material:** 300 Series Stainless

**Screw Material:** 300 Series Stainless



### Rated Ultimate Torque:

75in.lbs. min. (8.5Nm)

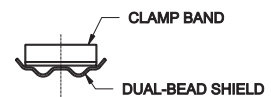
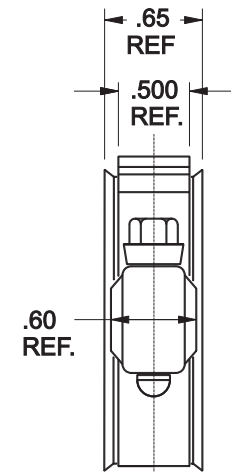
### Recommended Installation Torque:

50in.lbs. (5.6Nm)

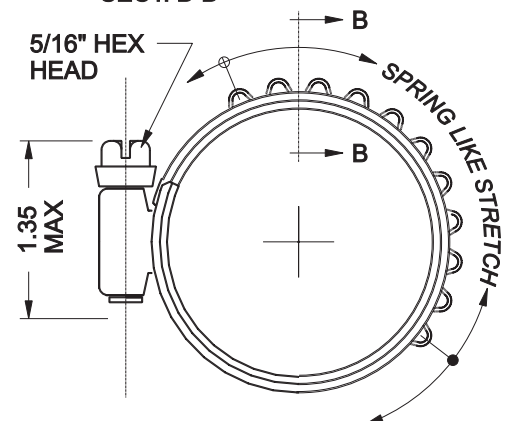
Part Number	Diameter Range SAE					
	Decimals		Inches		Millimeters	
<b>"300" Series</b>						
<b>Stainless Screws</b>						
TSS 14S30	1.12	1.50	1-1/8	1-1/2	28	38
TSS 16S30	1.20	1.63	1-1/5	1-5/8	30	41
*TSS 18S30	1.28	1.75	1-1/4	1-3/4	33	44
TSS 20S30	1.37	1.88	1-3/8	1-7/8	35	48
*TSS 24S30	1.56	2.13	1-9/16	2-1/8	40	54
TSS 28S30	1.63	2.38	1-5/8	2-3/8	41	60
TSS 32S30	1.80	2.63	1-13/16	2-5/8	46	67
TSS 36S30	1.97	2.88	1-31/32	2-7/8	50	73
TSS 40S30	2.25	3.13	2-1/4	3-1/8	57	79
TSS 44S30	2.50	3.38	2-1/2	3-3/8	64	86
TSS 48S30	2.75	3.63	2-3/4	3-5/8	70	92
*TSS 52S30	3.00	3.88	3	3-7/8	76	98
*TSS 56S30	3.25	4.13	3-1/4	4-1/8	83	105
*TSS 60S30	3.50	4.38	3-1/2	4-3/8	89	111
TSS 64S30	3.75	4.63	3-3/4	4-5/8	95	118
*TSS 68S30	4.00	4.88	4	4-7/8	102	124
*TSS 72S30	4.25	5.13	4-1/4	5-1/8	108	130
*TSS 76S30	4.50	5.38	4-1/2	5-3/8	114	137
*TSS 80S30	4.75	5.63	4-3/4	5-5/8	121	143
*TSS 84S30	5.00	5.88	5	5-7/8	127	149
*TSS 88S30	5.25	6.13	5-1/4	6-1/8	133	156
*TSS 92S30	5.50	6.38	5-1/2	6-3/8	140	162
*TSS 96S30	5.75	6.63	5-3/4	6-5/8	146	168
*TSS 104S30	6.25	7.13	6-1/4	7-1/8	159	181
*TSS 112S30	6.75	7.63	6-3/4	7-5/8	172	194
*TSS 116S30	7.00	7.88	7	7-7/8	178	200
*TSS 120S30	7.25	8.13	7-1/4	8-1/8	184	206

Other sizes available upon request. Available in packed and bulk stock. Other packaging configurations available.

\*items not stocked. special order only



SECT. B-B



260 Schilling Circle • Hunt Valley, MD, 21031, USA — Ph: 410-771-0380 • Fax: 410-771-5576

www.murraycorp.com • email: sales@murraycorp.com